

LIBRARY EXTENSION PROJECT

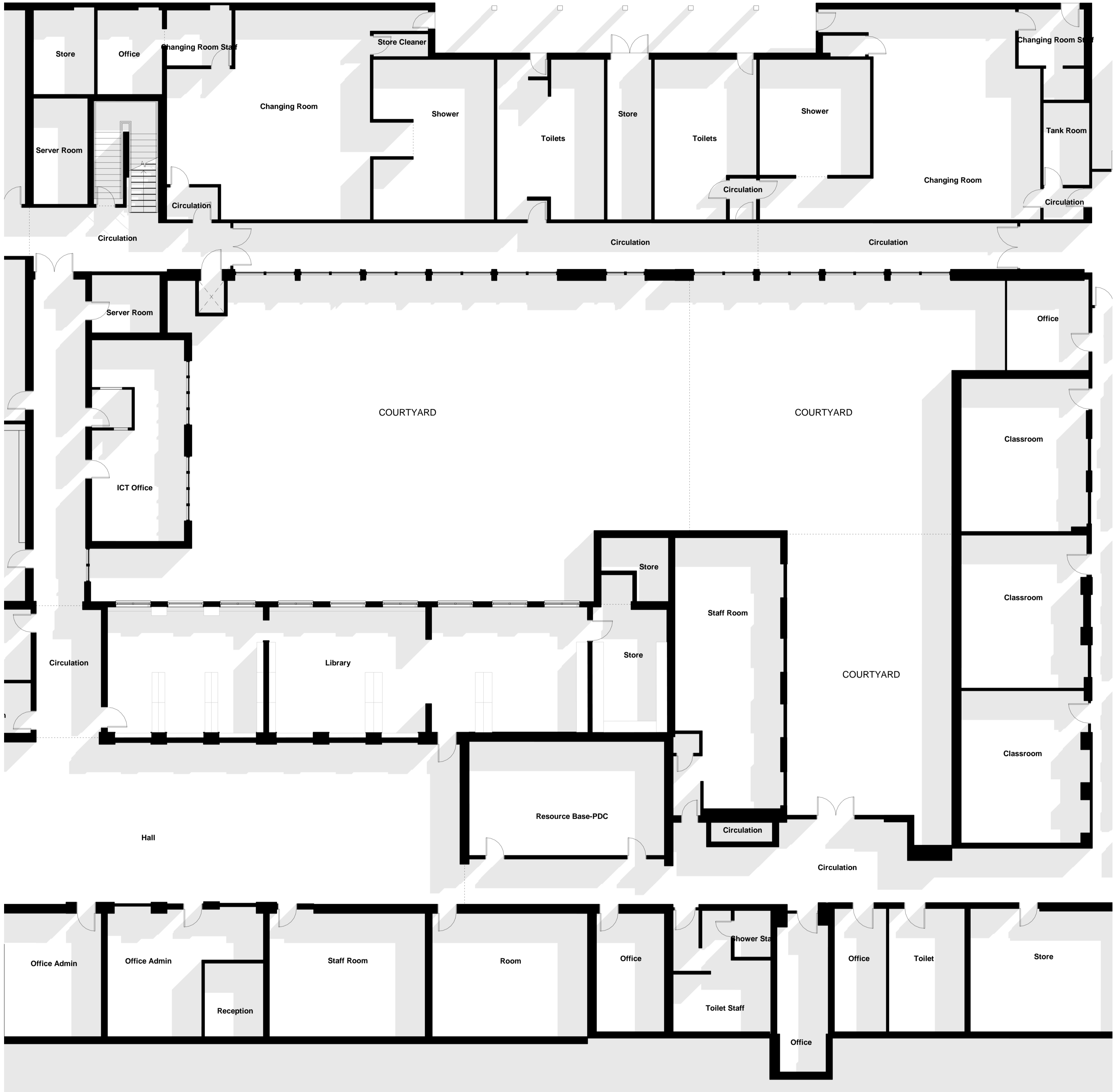
Exciting news! Our school is gearing up for a fantastic transformation by expanding the Library to create more learning space.

The plans comprise a spacious, double-height study area supported by a series of group rooms, all nestled in the courtyard next to our current library and surrounded by inviting landscaped courtyards.

Our vision for this project focuses upon:

- **Creating Inspiring Spaces:** benefiting from generous natural light, surrounded by natural materials with comfortable furniture. We're crafting spaces that ignite inspiration and help make learning a joy.
- **Fostering an Inclusive Learning Environment:** we're committed to building a learning space where everyone feels welcome and motivated. This should support self-directed study and collaborative group work in a dynamic setting. It should be an attractive destination the students are drawn to and somewhere they feel they belong.

- **Building on a Legacy of Excellence:** with a history stretching back 400 years, our plans aren't just about the present - they're about laying the groundwork for continued success. We're dedicated to preparing our pupils for excellence, now and in the future.
- **Honouring Heritage, Embracing Modernity:** our 1930s library holds a special place in the school's history, and we're keeping that spirit alive. We're not just expanding; we're complementing the heritage with modern, state-of-the-art facilities that will connect seamlessly and offer the best of both old and new.



EXISTING GROUND FLOOR PLAN



EXISTING COURTYARD AND SITE OF PROPOSED EXTENSION



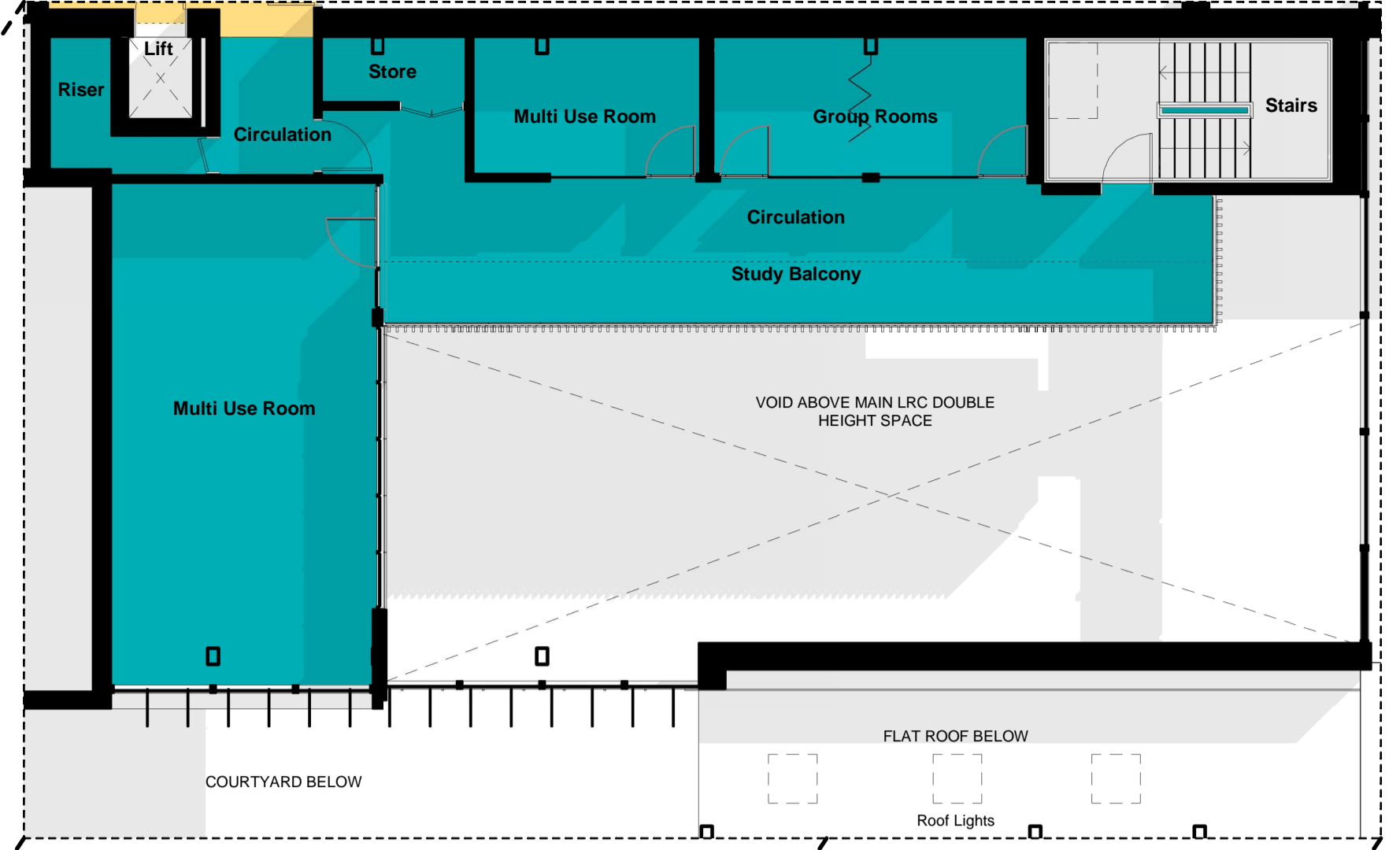
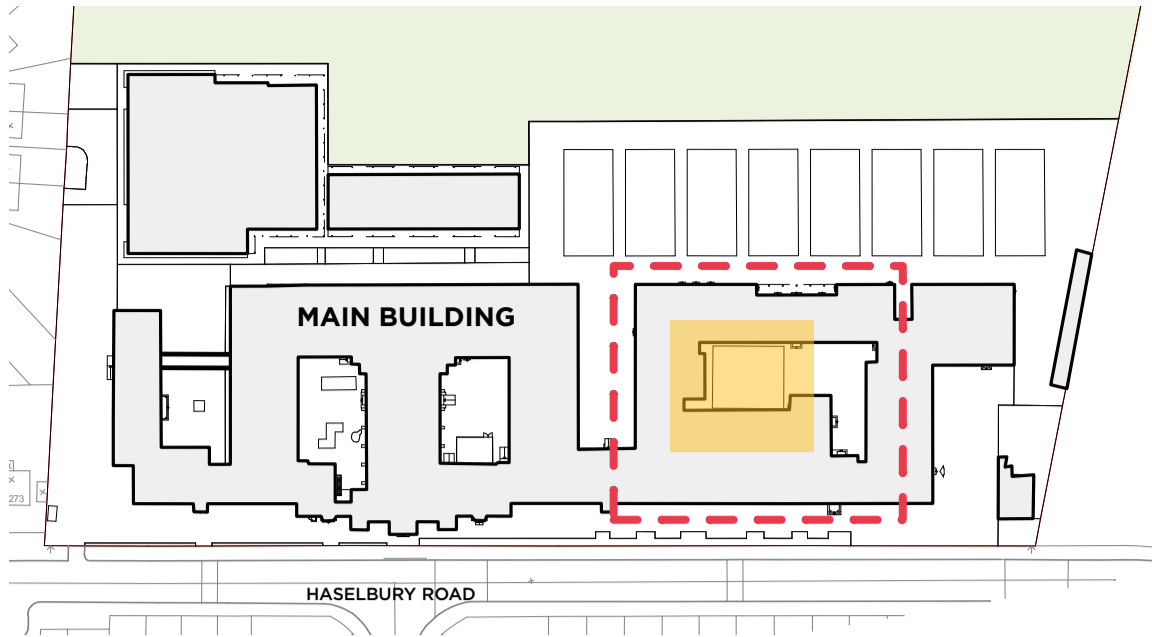
FAÇADE OF EXISTING LIBRARY TO BE INCORPORATED IN THE DESIGN



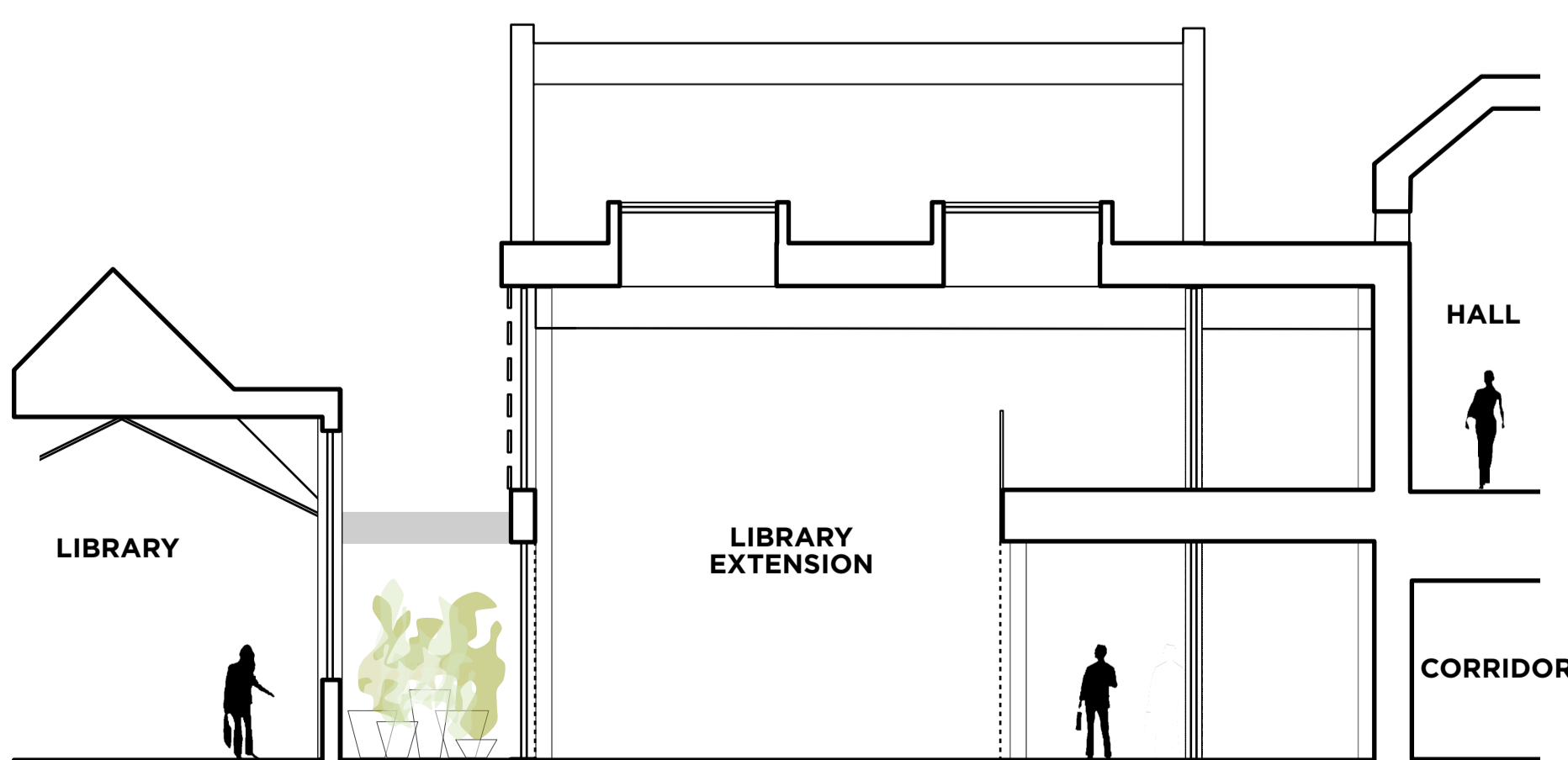
EXISTING LIBRARY PANELLING AND BOOKSHELVES TO BE RETAINED



PROPOSED FIRST FLOOR PLAN



PROPOSED GROUND FLOOR PLAN



- EXISTING AREAS UNALTERED
- EXISTING AREAS REFURBISHED
- NEW BUILD AREAS
- NEWLY LANDSCAPED COURTYARDS



CONCEPT VIEW OF LIBRARY EXTENSION



FLEXIBLE COMFORTABLE
SOFT FURNITURE



INHABITED WALLS AND DYNAMIC SPACES



LIGHT, BRIGHT LEARNING SPACE WITH
FURNITURE FOR COLLABORATION



HARMONIOUS BLEND OF OLD AND NEW

FUSION



**AYRE
CHAMBERLAIN
GAUNT**