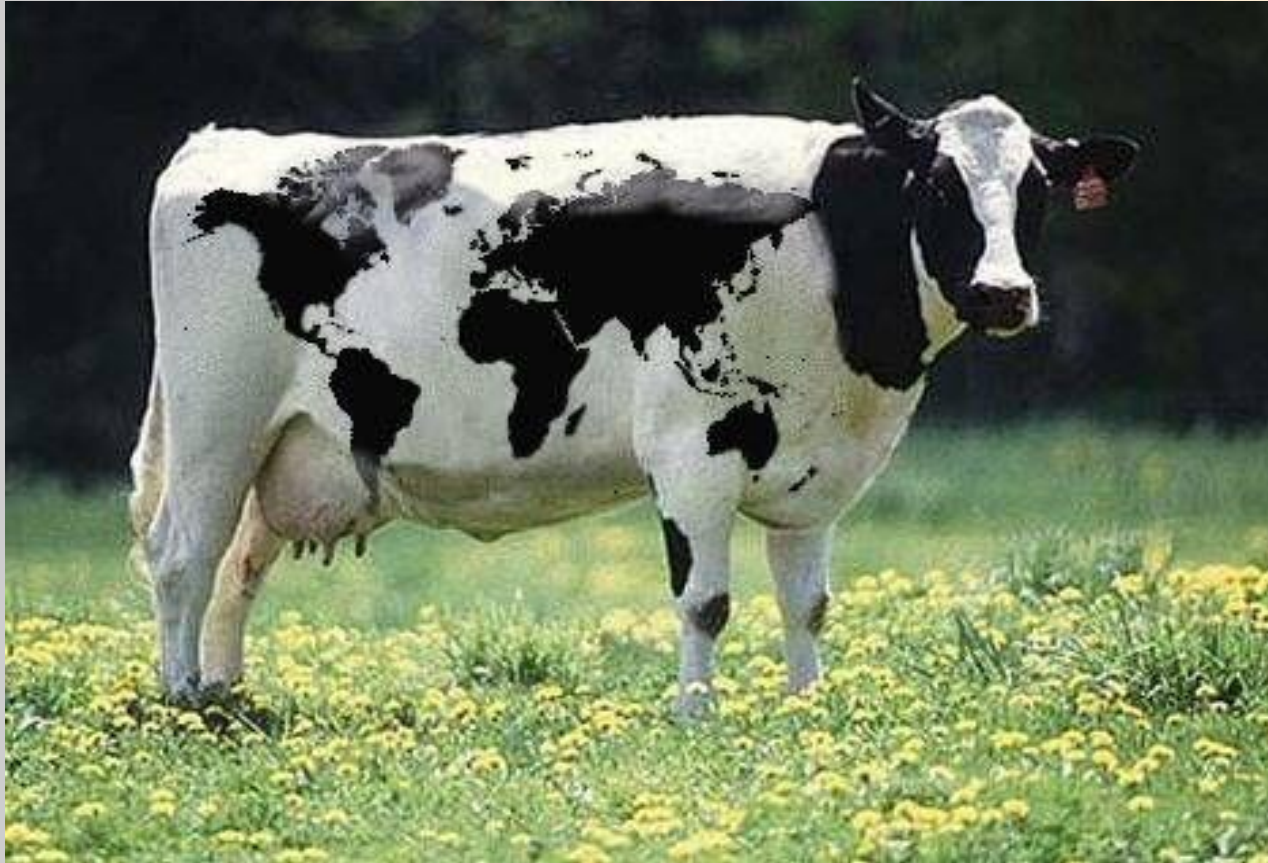


What do you see?



A close-up photograph of a person's face, where the skin is replaced by a world map. The person has striking green eyes and is looking directly at the camera. The map shows continents in various shades of brown, green, and yellow, set against a deep blue background representing the oceans. The overall effect is a visual metaphor for global geography.

**Welcome to
Geography!**

You **ENJOY** the subject at GCSE. This is the most important part of the decision making process.

You study a **RANGE** of interesting and topical themes. These help you understand the interconnectivity of the world around you.

You experience the environment directly through **FIELDWORK**. The independent investigation contributes to 20% of your final A-level certificate.



WHY GEOGRAPHY?



A geography degree can unlock an array of stimulating & well-paid **CAREERS** (see handout for some examples).

You gain a wide range of **TRANSFERABLE SKILLS**. (Discussed later).

You are assessed in a **VARIETY** of ways, inc. fieldwork, decision-making and extended writing.

What will you be studying?

Core units (80% of the A-level)

- Hazards*
- Coastal systems & Landscapes*
- Water and Carbon cycles
- Global Governance
- Changing Places*
- Population and the Environment



Investigation (20% of the A-level only)

This is where you complete an independent investigation which must include data collected in the field.

Frequently Asked Questions

1. Do you need GCSE Geography?
2. What are the staffing arrangements for A-level Geography?
3. What 'transferable skills' will I develop from studying Geography?
 - Numeracy, literacy, analytical skills and ICT
 - Teamwork e.g. working together to do fieldwork and class presentations.
 - Geographic Information Systems (GIS)
 - Synoptic writing: Analysis, synthesis and problem-solving
 - Evaluating, commenting and questioning.

Geographical Careers

- **Urban environments:**

Urban Regeneration Officer / Town Planner / Surveyor

- **Geographical Techniques:**

GIS operator / Cartographer / Aerial surveyor

- **Development & Global issues:**

Aid worker / Armed forces / Olympic Games adviser

- **Environment & Sustainability:**

Hydrologist / geologist/ Environmental engineer

Pollution analyst / Sustainability adviser



2022 Graduate unemployment rates

Physical and Geographical sciences	5.2%
English	7.3%
Geography	5.7%
History	7.9%
Biology	5.7%
Languages	6.9%
Chemistry	5.7%
Economics	6.5%
Maths	7.1%
Physics	7.7%
Media	7.6%
Politics	7.3%
Art	8.3%

Source: What do graduates do?

**...we hope you do as well!
We look forward to teaching
you in September 2024.**

A wide-angle photograph of a vast, sandy beach or dune. In the center, a person wearing a blue jacket and dark pants stands with arms outstretched. The words "WE LOVE GEOGRAPHY" are written in large, dark letters across the sand in front of the person. The background shows the ocean waves crashing against the shore under a bright sky. The foreground is filled with dark, dry grass.

WE LOVE GEOGRAPHY